



DELTA | GROUP

EMPOWERING IMAGINATION

# GETTING BACK TO STUDY

PROTECTION AND SOCIAL DISTANCING IDEAS FOR

SCHOOLS / COLLEGES /  
BUSINESS SCHOOLS / UNIVERSITIES

[hello@thedeltagroup.co.uk](mailto:hello@thedeltagroup.co.uk)

# We're looking forward to getting back to study, but we don't expect it to be business as usual.

That's why we've expanded our 'Advisory Signage and Personal Protective' equipment with suggestions and ideas for student traffic management, social distancing and responsible purchasing.

Whether that be focused on **protecting staff, pupils or students** in your:

- School
- College
- Business school
- University

**Branding** – We can also provide a creative artworking solution to brand all of the ideas aligned to your brand guidelines.

Delta is here to help. Please email [hello@thedeltagroup.co.uk](mailto:hello@thedeltagroup.co.uk) for more information.

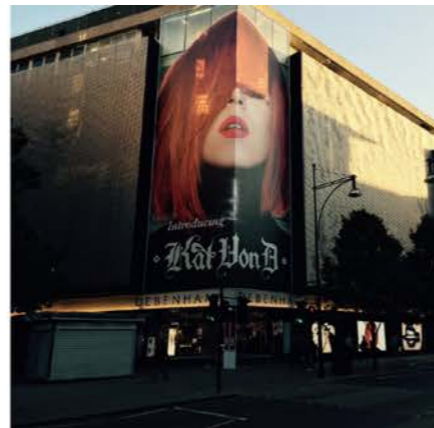
# Site Survey, Production and Installation Support

Merchandising, installation, field marketing and audit solutions

## Do you need help getting ready for reopening or are open and require support?

We can provide a one-stop shop 'Site Survey, Production and Installation' support for all your needs.

- **Survey / Audit** - We can provide reliable, highly skilled teams to help site survey to ensure your needs are met
- **Design** - We can help artwork and design all the collateral
- **Produce / Source** - We can source bespoke product and produce all the printed collateral
- **Install** - We have a dedicated in-house installation team to expertly project manage and install - both inside and outside stores
- **Technology** - We have technology for accurate real-time reporting on progress.



# Delta Group - Health & Safety

Health and safety is at the forefront of our culture

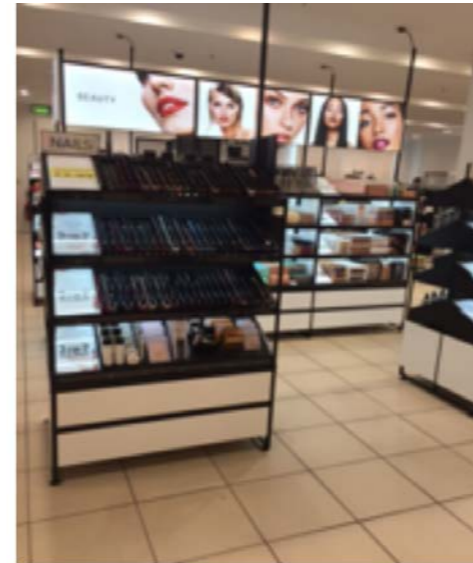
Method statements and risk assessments undertaken for all jobs

All installers are:

- PASMA, IPAF, CSCS and IOSH qualified
- Safe Contractor approved

For more information or to book a store visit please get in touch with your usual Delta contact or send an email to:

[hello@thedeltagroup.co.uk](mailto:hello@thedeltagroup.co.uk)





# **SIGNAGE**

# Circular Floor Stickers

300mm diameter floor stickers for various communications.

(Can be made to any size or shape).



FC01



FC02



FC03



FC04



FC05



FC06



FC07



FC08



FC09



FC10



FC11



FC12



FC13



FC14



FC15

# Large Signage

Large signage to communicate social distancing.

LS01



LS02



LS03



# Directional Signage

Signage to direct people to sanitation points.





# Strip Floor Stickers

75mm x 1000mm floor vinyls to include various messages. (Can be made to any size).



Contact: [hello@thedeltagroup.co.uk](mailto:hello@thedeltagroup.co.uk)

# Staircase Stickers

Strip vinyls to be placed in stair wells to inform of social distancing.

SC01



SC02



SC03



SC04



Contact: [hello@thedeltagroup.co.uk](mailto:hello@thedeltagroup.co.uk)

# No Entry Signage

A range of 'no entry' and 'closed' signage.

DNE01



DNE02



DNE03



DNE04



DNE05



DNE06



DCL01

# Social distancing - Clean stencil

Placed 2 metres apart to assist and protect students / teachers as they queue in outdoor spaces.



Could either be jet-washed or semi-permanent chalk sprayed on pavements or car parks.

Contact: [hello@thedeltagroup.co.uk](mailto:hello@thedeltagroup.co.uk)

# Meeting Room Guidance Communication

Signage to appear outside meeting rooms to advise the restriction on number of people allowed inside to adhere to social distancing measures.



Blank Graphic



Example



The numbers will be magnetic to provide for flexibility within the environment.

# On-Desk / Counter Messaging

A suite of on-desk or counter top messaging to encourage social distancing.

Toblerone Landscape



A4 Acrylic Holder



A4 Cube



Toblerone Portrait

Contact: [hello@thedeltagroup.co.uk](mailto:hello@thedeltagroup.co.uk)

We have a wider range of products here: [Protective Equipment](#)

# Window Vinyls

Window Vinyls to inform customers that steps have been taken in store to protect shoppers.



Contact: [hello@thedeltagroup.co.uk](mailto:hello@thedeltagroup.co.uk)

# Traffic flow

One way flow of traffic where possible would help stop people having to pass in the aisles.



Contact: [hello@thedeltagroup.co.uk](mailto:hello@thedeltagroup.co.uk)



# Elevator Signage

Signage to appear outside elevators and social distancing markers to appear inside.

ES01



ES02



Contact: [hello@thedeltagroup.co.uk](mailto:hello@thedeltagroup.co.uk)

# Checkout - social distancing floor markers

Floor stickers placed 2 metres apart can assist and protect customers as they queue for the checkout.



FLOOR GRAPHIC

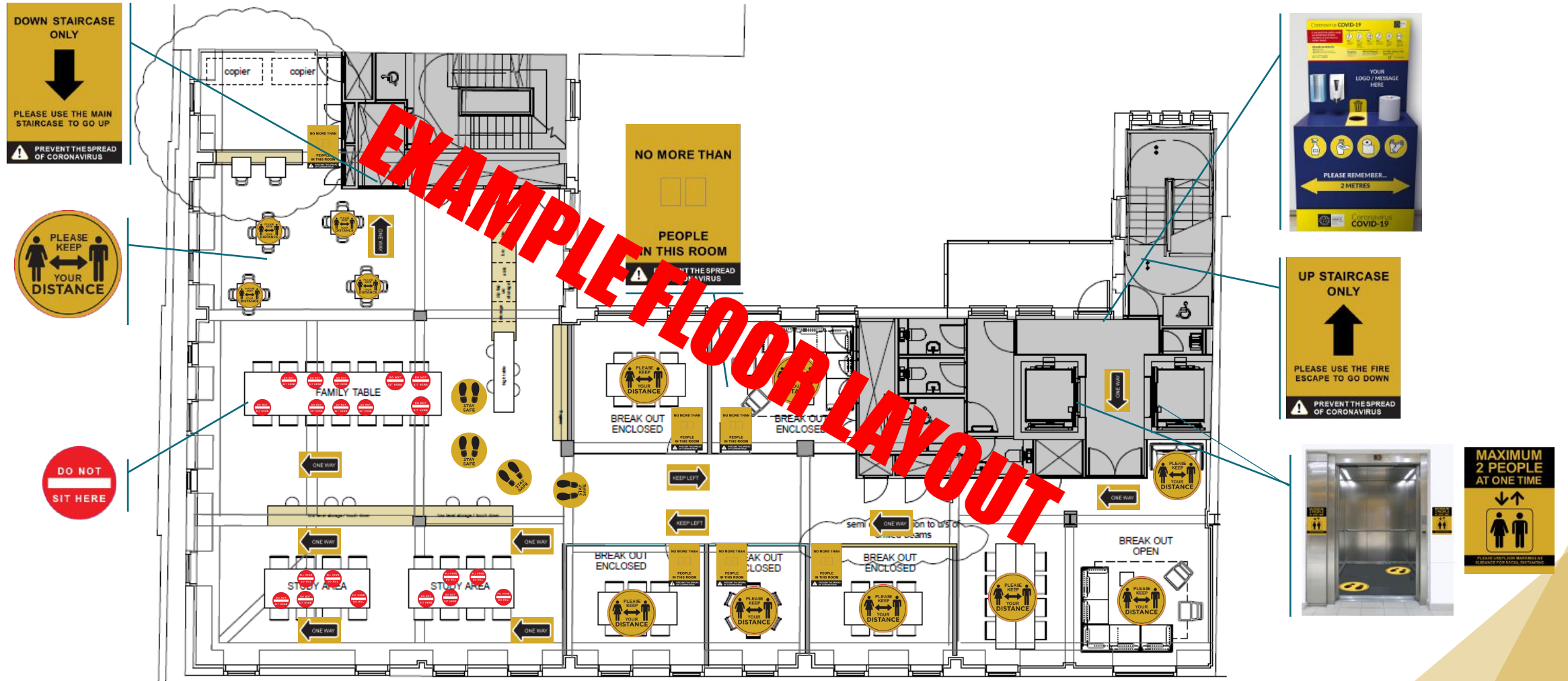


CHECKOUT SIGNAGE



Contact: [hello@thedeltagroup.co.uk](mailto:hello@thedeltagroup.co.uk)

# Example of a full floor plan to help plan requirements





# **SPACE SEPARATORS**

# Hanging Counter Screen

A clear, modular screen that hangs from the ceiling and can be made to suit various sized checkouts.



Contact: [hello@thedeltagroup.co.uk](mailto:hello@thedeltagroup.co.uk)

# Counter Screen

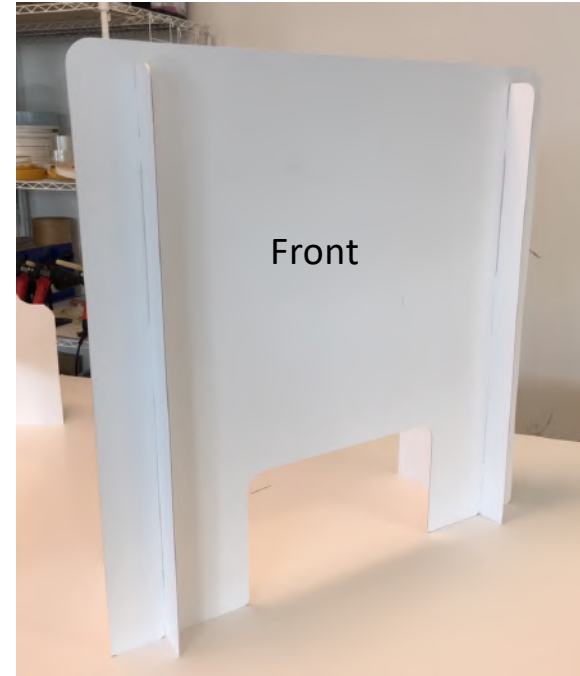
Clear, modular, perspex screens that can be securely situated on counter tops via adhesive pads on feet.

These can be built to various size requirements (pictured are 750mm x 600mm).

Ideal for tills, desks or reception areas to separate people, support social distancing and provide protection against COVID-19.

## Key features:

- High-impact strength & lightweight
- Easy to assemble/position (delivered flat)
- Optically clear for maximum visibility
- Can be cleaned & reused



White images to illustrate the product style – the end product is made with clear material as below



# Screen Dividers

Multi-purpose freestanding dividers.

To separate queues at tills or to support social distancing, keeping people protected in other environments.

Sizes can be bespoke (these are 1m x 2m).

- 1 Metal feet with wood-print-effect on foamex
- 2 Metal feet with clear polycarbonate material
- 3 White smartex material throughout



# Space Protector

FOR OFFICES, MEETING ROOMS & CANTEENS



- No installation required
- Easy to lift
- Rigid & strong
- Made from recycled pulp board
- Board fully recyclable
- Bespoke sizes available



All artwork / products shown are for visual purposes only. Final production may differ.



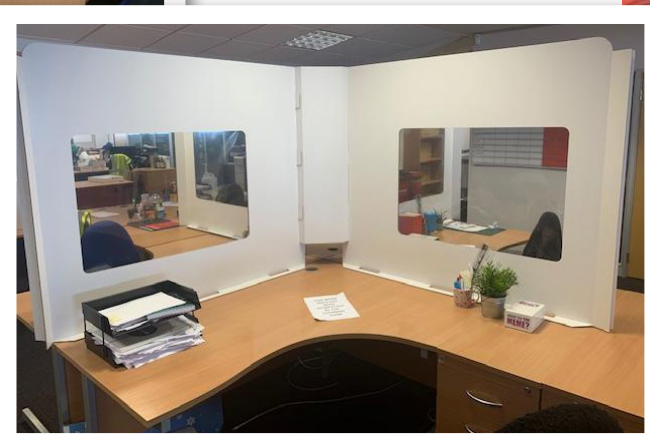
# Desk Dividers

Robust units that can be provided individually or adapted to various desk setups.

Can be branded to client's needs.



Clear perspex within structure for social distancing safety yet allowing for light and communication



# Protective Pod

An 'L' shaped protective pod with clear acrylic window to help shield employees work stations, seating or other areas.



Contact: [hello@thedeltagroup.co.uk](mailto:hello@thedeltagroup.co.uk)

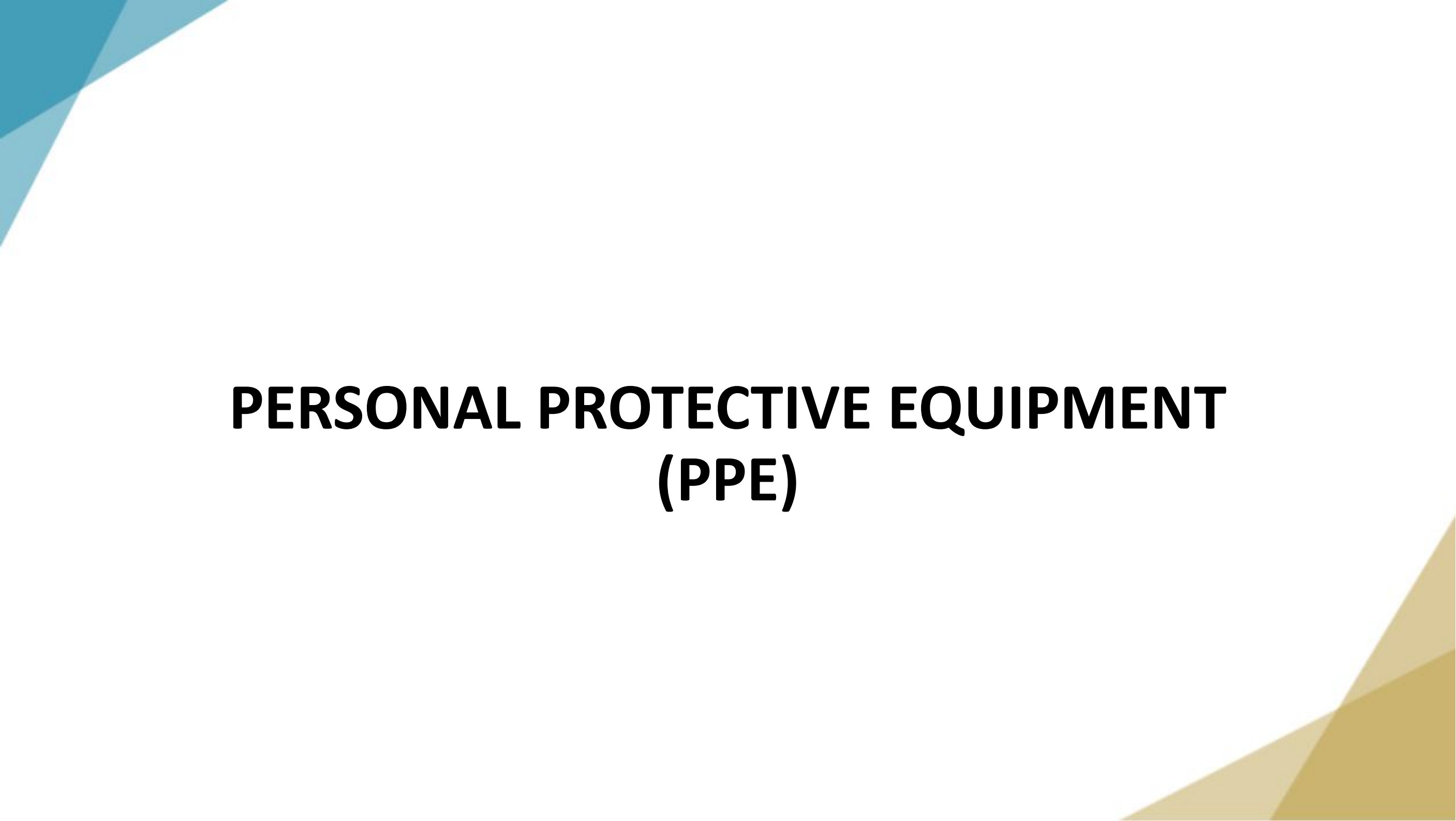
# Belt Barrier

Practical barrier with retractable belt, perfect for employee queueing areas.

Note: two barriers are needed to start a set - belt extends to 2.5m width.



Contact: [hello@thedeltagroup.co.uk](mailto:hello@thedeltagroup.co.uk)



# **PERSONAL PROTECTIVE EQUIPMENT (PPE)**

## Style: TDG04, Face Shield

Lightweight face shield, constructed of PVC, adjustable 20mm knitted elastic headband and a soft polyether AS702 white foam head support for long-term comfort.

Designed as a barrier against coughs and sneezes + to stop the wearer from touching their face and eyes.

**Factory accredited:** ISO9001 / ISO14001 / OHSAS18001

### Key features:

- High-impact strength & lightweight
- Easy to assemble/position
- Fully-adjustable to cater for different head sizes
- Can be worn over eyewear and face masks
- Optically clear for maximum visibility
- Can be cleaned & reused

For thorough cleaning, use non-abrasive detergent such as washing up liquid.

The best way to achieve affective cleaning without streaks is to use a microfiber cloth that is simply dampened with water.

Abrasive or strongly alkaline detergents, solvents, leaded benzene and carbon tetrachloride should not be used



*Technical specification sheets available on request*



DELTA | GROUP

EMPOWERING IMAGINATION

# Reusable Face Mask

Antibacterial protective mask with DUPONT SILVADUR Technology.

Products can be branded with messaging or company logo.

Available in approx. 2 weeks from order.

## Key features:

- Breathable
- Ultra-soft cotton
- Fully-adjustable to cater for different head sizes
- Dust-proof
- Can be washed & reused



**AAA LEVEL STANDARD  
DOUBLE PROTECTION**

Dupont SILVADUR - NanoSilver fabric for protection from pollution, dust, pollen, smog, germs, and bacteria.

**ODOR CONTROL**  
Smart fresh antibacterial technology can provide fresh feeling all day.

**EAR LOOP**  
High resilience (elastic) adjustable ear loop.

**ANTIBACTERIAL & ANTIVIRAL**  
After 50 times of frequent washing, the antibacterial rate is still >99%, in line with national "FZ/T73023 antibacterial knitwear" AAA security standard.

**SMART ANTIBACTERIAL FABRIC**  
Had entered the International Environmental Textile Association, Registered in the US Environmental Protection Agency (US EPA). Passed the Biocidal Products Regulations (BPR) safety certification.

**WASHABLE · REUSABLE · BREATHABLE**



*Technical specification sheets available on request*

# TDM-PPE-120 - 3 Ply Face Mask

- This is a **non-medical Grade public/civilian 3 Ply Face Mask** made to EN149:2001+A1:2009.
- Made of PP non woven fabric. Latex free. The molding and affinity layers are spunbonded non woven fabric.
- The filter layer is melt blown non woven fabric. Light and very low resistance to breathing with an anti wrinkle design.
- Protection level rating A which is the lowest level of protection for low risk situations where there is low risk to fluid, spray or aerosol exposure.
- Flat ear loop with medium strength to all comfort during extended wear.
- Mask Size 18cms x 9.5cms.
- Packed in multiples of 50 masks.



*Technical specification sheets available on request*

# TDM-PPE-122 - 3 Ply Surgical Face Mask Type IIR.

- This is a **medical grade CE approved** 3 Ply Face Surgical fluid and splash resistant mask made to BS14683:2019.
- BFE rating  $\geq 98\%$  providing excellent bacterial filtration. Splash resistance  $>120\text{mmHG}$  Made of PP non woven fabric. Latex free. The molding and affinity layers are spunbonded non woven fabric.
- The filter layer is melt blown non woven fabric.
- Protection level level 2 which provides protection for fluid, splash or spray and recommended in Healthcare environments or where there is a confirmed or high risk of infection from airborne particles.
- Flat ear loop with medium strength to all comfort during extended wear.
- Mask Size 17.5cms x 9.5cms.
- Packed in multiples of 50 masks.



*Technical specification sheets available on request*



# TDM-PPE-190 - KN95 Multilayer Protection Mask

- This is a **medical grade CE & FDA approved** Multilayer Protection Mask with particle filtration efficiency BFE  $\geq$  95%.
- Made to EN149:2001+A1:2009, GB2626-2006KN95 and FFP2 NRD standards. A 3 layer mask, External and internal layers are made of spunbond polypropylene, the filter layer is made of meltbond polypropylene. Ultrasonically welded for strength. An integral nose clip providing a reliable tight fit.
- The metal nose clip is not exposed. Comfortable ear loops allow the mask to easily and quickly be applied and removed.
- Antivirus, antidroplet, antipollution, antibacterial. Latexfree.
- Mask Size 17.5cms x 9.5cms.
- Packed in multiples of 10 masks.



*Technical specification sheets available on request*

# Disposable Gloves

- Nitrile examination gloves
- Powder-free
- Available in different sizes (Large mainly used)
- Packed 100 pieces per box
  
- Certified: ASTM D6319-10
- Timing: 6 weeks via sea freight, 3 weeks by air freight



*Technical specification sheets available on request*

# Cleaning Wipes

Technical specification sheets available on request

- Antibacterial wet wipes
- Proven to kill 99% of germs\*
- 100 wipes per pack (12 packs/box)
- Suitable around baby equipment, food preparation areas and toilets
- Free from Alcohol, Paraben

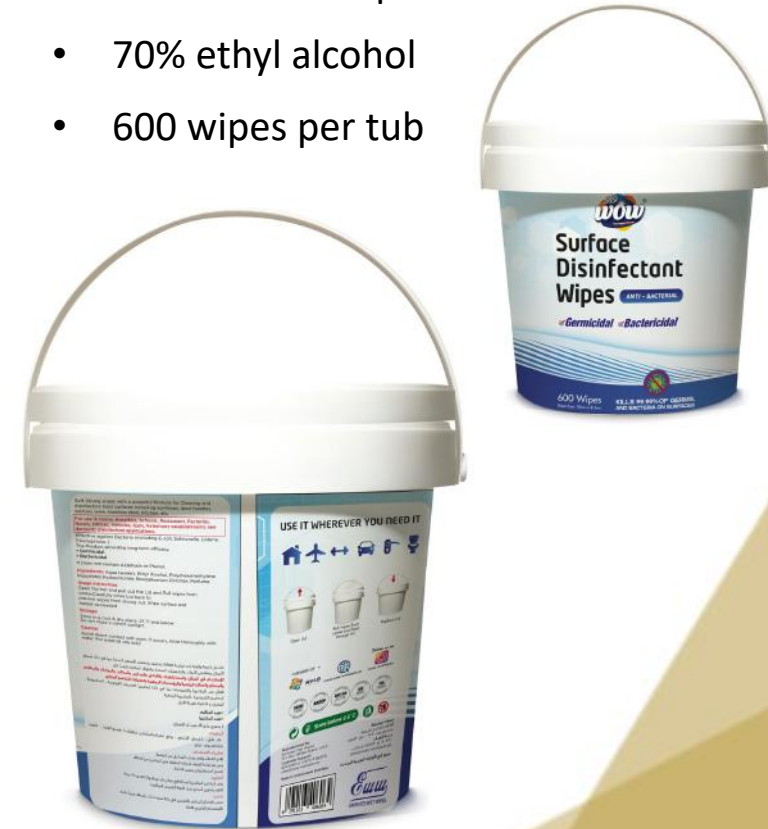


*\*Effective against Escherichia coli ATCC 10536, Staphylococcus aureus ATCC 6538, Pseudomonas aeruginosa ATV 15442, Enterococcus hirae ATCC 10542, Escherichia coli K12 NCTC 10538)*

- 75% alcohol with lemon fragrance
- 120 wipes per pack
- Period after opening = 6 months (due to alcohol content)
- Expiry if not open is 2022
- Reach compliant: 1907/2006, Annex II (COMMISSION REGULATION (EU) No 2015/830).



- WOW Antil bac Surface Disinfectant Wipes
- 70% ethyl alcohol
- 600 wipes per tub

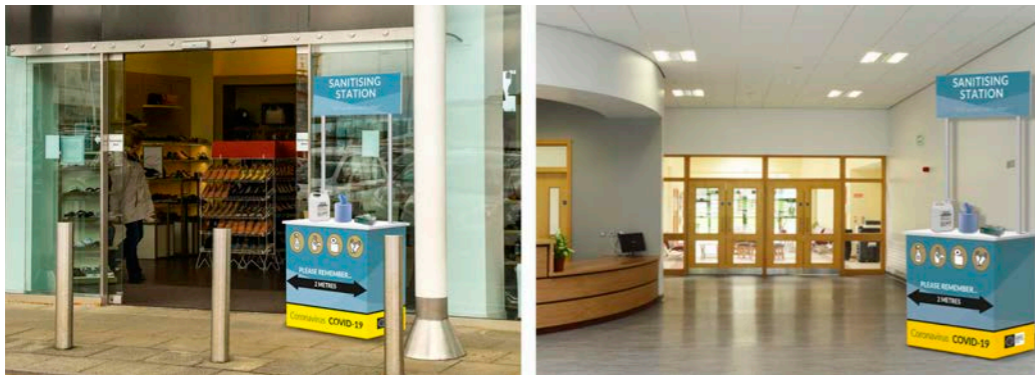


# Sanitation Station

A modular unit which houses sanitation equipment and communicates coronavirus information.

The unit can be made to various sizes to suit different locations.

Our standard sizes are:  
2400mm x 1200mm x 400mm,  
2400mm x 600mm x 400mm



Contact: [hello@thedeltagroup.co.uk](mailto:hello@thedeltagroup.co.uk)

# Hand Sanitiser

500ml Moisturising Hand Sanitiser.

- Kills 99.99 percent of germs
- Moisturising on hands
- Lemon fragrance

Labelling can be designed to feature your chosen branding.

YOUR BRANDING HERE



Contact: [hello@thedeltagroup.co.uk](mailto:hello@thedeltagroup.co.uk)

# Clothing

Branded re-useable apron /T-shirts.



Contact: [hello@thedeltagroup.co.uk](mailto:hello@thedeltagroup.co.uk)

# Hi-Vis Vests

BACK



OPTION 1



OPTION 2



FRONT



# **ENHANCED MESSAGING**



# Roller Banner

Update-able banners to carry important customer information.

Light weight and moveable with an easily cleaned base.

Contact: [hello@thedeltagroup.co.uk](mailto:hello@thedeltagroup.co.uk)



# EAS Shrouds

EAS Shrouds to give covid based information to people as they enter / exit.



Contact: [hello@thedeltagroup.co.uk](mailto:hello@thedeltagroup.co.uk)

# A-frame (A1)

A frame to contain comms about distancing, altered opening hours or any other relevant info.



Contact: [hello@thedeltagroup.co.uk](mailto:hello@thedeltagroup.co.uk)

# Pin Badges

Branded pin badges that can be cut to shape as desired, to inform of social distancing.



Contact: [hello@thedeltagroup.co.uk](mailto:hello@thedeltagroup.co.uk)

# SEAT COVERS

Seat covers highlighting that the seat is 'not for use' and therefore encouraging social distancing.



Contact: [hello@thedeltagroup.co.uk](mailto:hello@thedeltagroup.co.uk)

Seat covers attach across the back, enabling fit to a wide variety of seating.

# Lecture Theatres

Placement of social distancing signage to make lecture theatres and classrooms as safe as possible.



# Social distancing - Floor, wall and seating markers

Stickers placed 2 metres apart can assist and protect employees as they queue or sit in canteens / restaurants.



floor sticker



bench sticker



posters



Contact: [hello@thedeltagroup.co.uk](mailto:hello@thedeltagroup.co.uk)

# Chip and Pin Cladding

A chip and pin device cladding which encourages shoppers to use contactless pay to avoid touching the device.

This could be used in conjunction with anti-bac CTU's for shoppers who cannot avoid touching the keys.



Contact: [hello@thedeltagroup.co.uk](mailto:hello@thedeltagroup.co.uk)



# Contactless Cradle

A cradle to hold chip and pin devices firmly in place. The cradle can be fixed to till surface with adhesive double-sided strips on the bottom.



Contact: [hello@thedeltagroup.co.uk](mailto:hello@thedeltagroup.co.uk)

# Fresh Produce Self Service

Fresh produce is protected by a clear cover. Instructions are included to inform customers of how to use supplied bags to cover their hands before picking up produce.

## STOP THE SPREAD

- 

1. TAKE A BAG FROM DISPENSER
- 

2. PLACE HAND IN BAG
- 

3. PICK UP PRODUCE THROUGH BAG
- 

4. TURN BAG INSIDE OUT AND TIE TOP



Contact: [hello@thedeltagroup.co.uk](mailto:hello@thedeltagroup.co.uk)

THANK YOU



DELTA | GROUP

EMPOWERING IMAGINATION

[hello@thedeltagroup.co.uk](mailto:hello@thedeltagroup.co.uk)